

# The Insides™ System<sup>fi</sup>

For effective Chyme Reinfusion treatment of Enteroatmospheric Fistulas and High-Output Enterostomies.

The Insides™ System<sup>fi</sup> comprises of:

- 1 x The Insides™ Driver
- 1 x The Insides™ Tube
- 10 x The Insides™ Pump



## Unmet Clinical Need Treating Enteroatmospheric Fistulas & High-Output Enterostomies



1.43 catheter-related bloodstream infections per 1000 catheter days<sup>1</sup>



15–40% develop intestinal failure related liver failure<sup>2</sup>

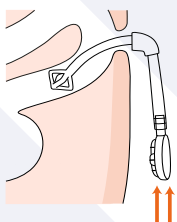


12.7-fold increase in severe CKD  $\geq 4$  due to high volume fluid loss<sup>3</sup>



Reduced Quality of Life

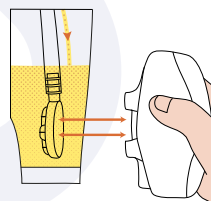
## How The Insides™ System<sup>fi</sup> Works



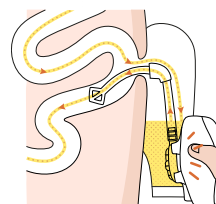
1) The Insides™ Tube is cannulated into the distal limb



2) The Insides™ Pump sits inside the ostomy appliance



3) The Insides™ Driver is coupled to The Insides™ Pump, as needed



4) The Insides™ Driver propels The Insides™ Pump to reinfuse chyme back into the gut

## The Clinical & Economic Benefits of Chyme Reinfusion



Restart Oral Nutrition<sup>4</sup>



Positive Weight Gain<sup>5</sup>



Reduce Risk of Line Sepsis<sup>5,6</sup>



Reduced Dehydration & Risk of Renal Impairment<sup>3</sup>



Recovery of Liver Enzymes<sup>4</sup>



Reduced days in hospital



Reduce Use of High Cost Therapy



Reduced Cases of Readmission



Reduced rate of Mortality

## About The Insides Company



Granted Breakthrough Device Designation by the U.S FDA



IEC 60601-1 & 60601-2 Certified



ISO13485 Certified



Awarded NZX Early Stage Companies award in Technology Investment Network Report 2019

### References

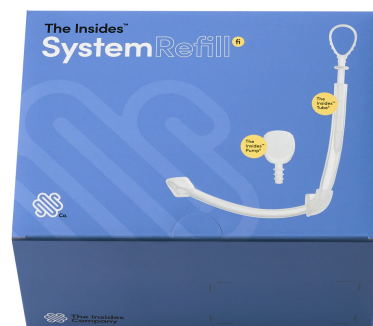
- Brandt, C. F., Tribler, S., Hvistendahl, M., Naimi, R. M., Bräbech, P., Staun, M., & Jeppesen, P. B. (2016). Home Parenteral Nutrition in Adult Patients With Chronic Intestinal Failure. *Journal of Parenteral and Enteral Nutrition*, 014860711667876. <https://doi.org/10.1177/014860711667876>
- Woodward, J. M., Massey, D., & Sharkey, L. (2020). The Long and Short of IT: intestinal failure-associated liver disease (IFALD) in adults—recommendations for early diagnosis and intestinal transplantation. *Frontline Gastroenterology*, 11(1), 34–39. <https://doi.org/10.1136/flgastro-2018-101069>
- Fielding, A., Woods, R., Moosvi, S. R., Wharton, R. Q., Speakman, C. T. M., Kapur, S., et al. Renal impairment after ileostomy formation: a frequent event with long-term consequences. *Colorectal Disease*
- Sharma, P., Davidson, R., Davidson, J., Keane, C., Liu, C., Ritchie, S. R., Chu, K., Sutherland, G., Bissett, I. P., & O'Grady, G. (2020). Novel chyme reinfusion device for gastrointestinal fistulas and stomas: feasibility study. *British Journal of Surgery*. <https://doi.org/10.1002/bjs.11516>
- Bhat, S., Sharma, P., Cameron, N.-R., Bissett, I. P., O'Grady, G. Chyme Reinfusion for Small Bowel Double Enterostomies and Enteroatmospheric Fistulas in Adult Patients: A Systematic Review. *Nutr Clin Pract*
- Dreesen, M., Foulon, V., Spriet, I., Goossens, G. A., Hiele, M., De Pourcq, L., et al. Epidemiology of catheter-related infections in adult patients receiving home parenteral nutrition: A systematic review. *Clin Nutr*

# **The Insides™** **System Refill**

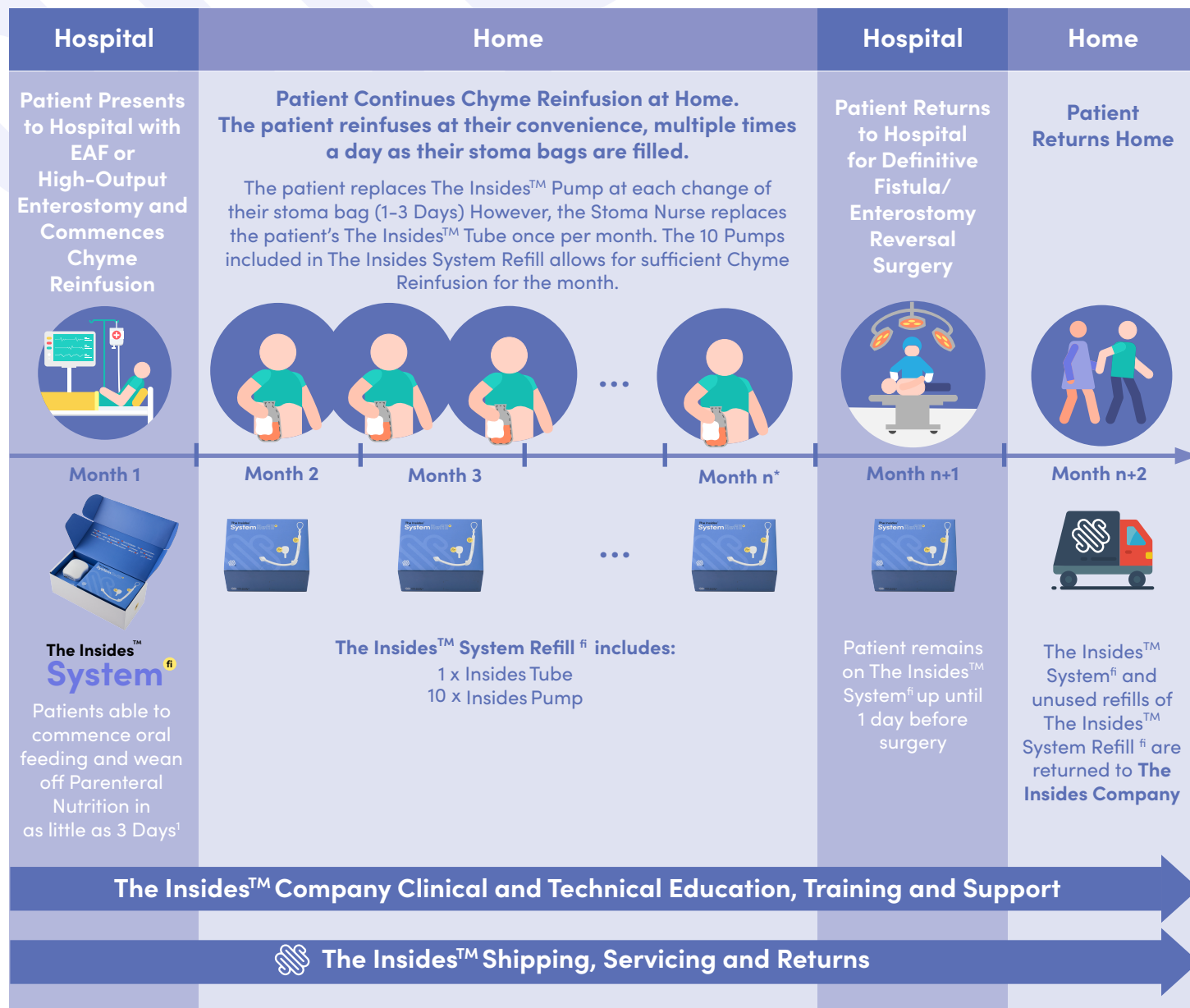
One month's supply for effective Chyme Reinfusion treatment of Enteroatmospheric Fistulas (EAF) and High-Output Enterostomies.

The Insides™ System Refill<sup>fi</sup> comprises of:

- 1 x The Insides™ Tube
- 10 x The Insides™ Pump



## Enteroatmospheric Fistula & High-Output Enterostomy Patient Journey



\* Time required for closure will vary according to their physiology, personal experience and the professional judgement of their physician

### References

1. Layec S, Seynhaeve E, Trivin F, Carsin-Mahé M, Dussaulx L, Picot D. Management of entero-atmospheric fistulas by chyme reinfusion: A retrospective study. Clin Nutr [Internet]. 2020 Apr; Available from: <https://linkinghub.elsevier.com/retrieve/pii/S0261561420301485>